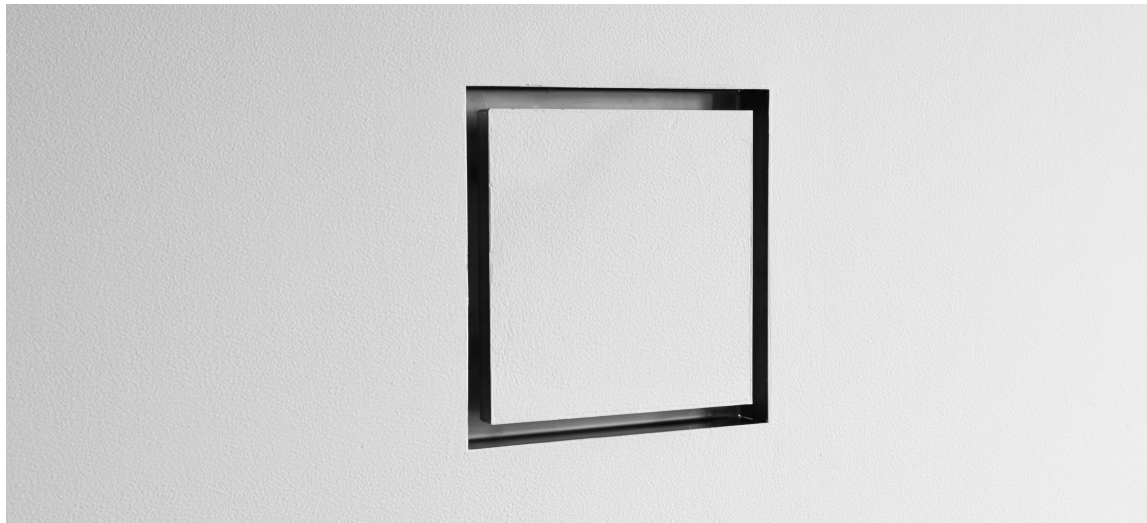


VMDPPFM14X14I1 square FLAT CUSTOMIZABLE air diffuser

Square "FLAT CUSTOMIZABLE" DIFFUSER code VMDPPFM14X14I1



FEATURES

Diffuser, which can be used for both air intake and extraction in indoor environments.

It consists of a square sunken screen in stainless steel, with electro-welded mesh inside to facilitate the setting of **mortar** (if the customer decides to fill the screen with mortar).

The mesh can, on the other hand, be easily removed on site in case you want to **customize the screen with material such as tiles** (the grip of the glue may be better on the surface without the mesh) **or wood**, etc.; removal of the mesh is done after grinding the welding points of the mesh.

It also consists of a frame equipped with a "guide" to **adjust on 4 positions** (steps 7.5mm pitch between each other) the depth of the screen with respect to the 3rd position (**flush-wall position**).

The 1st step corresponds to the closed position.

A 4th position is available in case a somewhat larger flow rate than flush-wall position is desired.

Frame thickness: 30.5 mm.

The screen pulls out and inserts easily for cleaning.

Construction materials

- "Fine Brushed" AISI 304 stainless steel 1mm thick for the frame.
- Stainless steel (+ electrowelded mesh for clinging to the screen function) for the screen.
- Steel for the clips (springs) for sliding/guiding/fixing the screen to the frame.

Screen color

The screen should be filled with mortar or other material, at the customer's convenience.

Fixing method

Steel clips (springs), standard.

Screws (No. 4 included) for fixing the frame to a VMAD adapter or directly to wood or plasterboard wall or duct, etc.

ACCESSORIES

- Sheet metal adapter VMAD14X14 series.
- Adapter accessories (extension, filter, etc.).

AN ADVICE

Before installing and/or arranging for the diffuser, it is advisable to read the **instructions for use** that refer to the three cases:

- Installation with "plaster level bands",
 - installation before the bands,
 - "Drywall" installation.
-

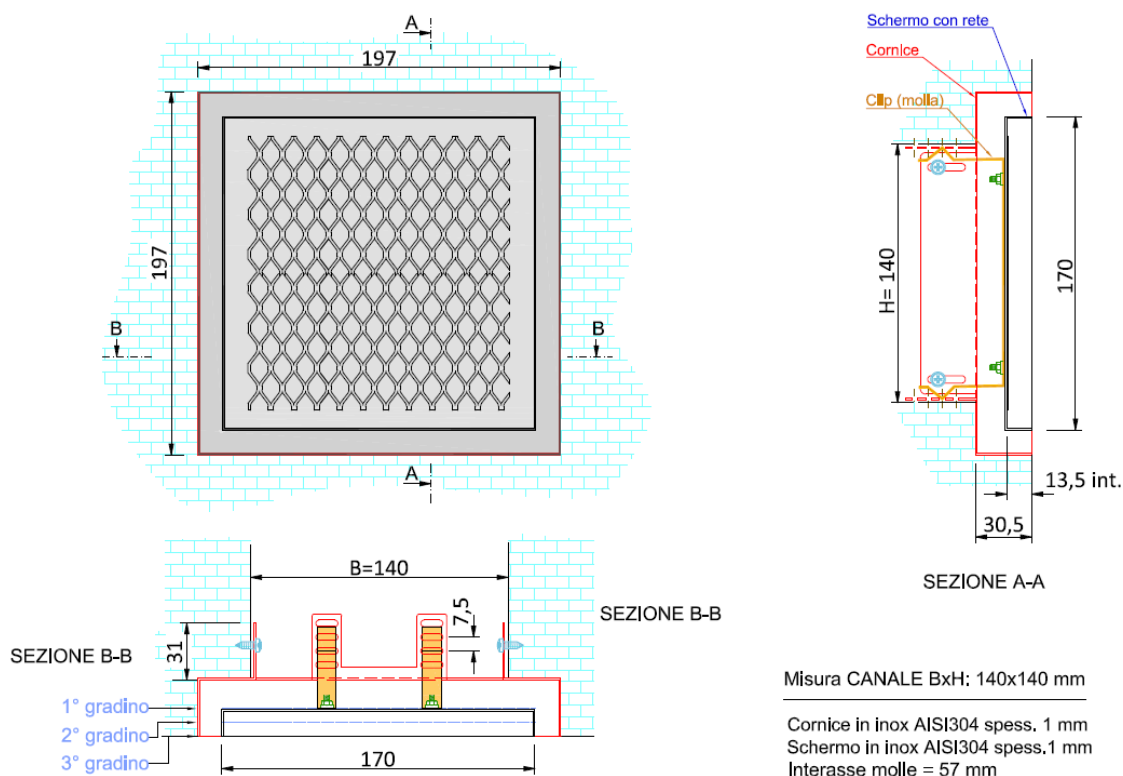
QUICK SELECTION TABLE

Code	Position on "guide"	Screen size [mm]	Total air flow area [m ²]	Flow rate (m ³ /h) with v =1 m/s*	Flow rate (m ³ /h) with v =2 m/s*	Flow rate (m ³ /h) with v =3 m/s*
VMDPPFM14X14I1	2nd step	197x197	0.0037	14	27	41
	3rd step	197x197	0.0080	29	58	-
	4th step (off wall)	197x197	0.0123	44	-	-

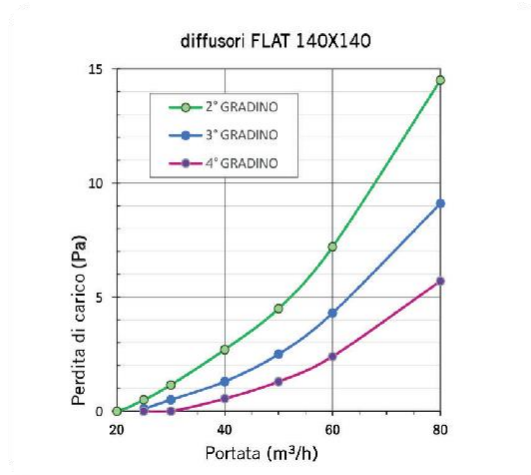
(*) Flow rates in bold can be obtained by associating the diffuser with an adapter with Ø90 "Grey" collars (and piping) while flow rates not in bold can also be obtained with adapters with Ø75 "Grey" collars.

DIMENSIONS

Diffusore FLAT Personalizzabile filo muro in inox 140x140 mm. Codice: VMDPPFM14X14I1

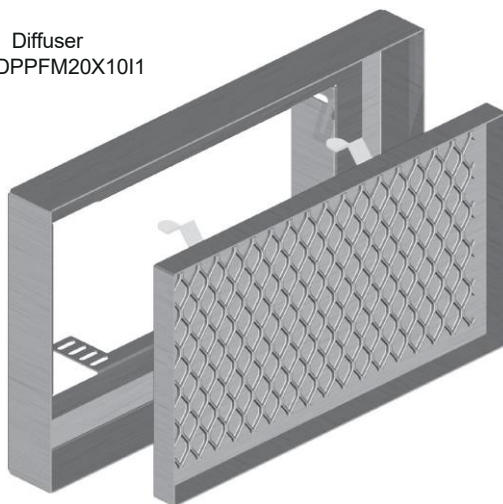


GRAPH

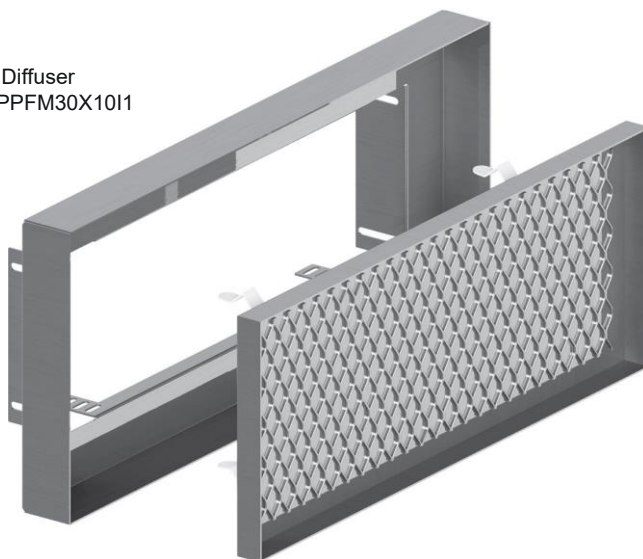


3-D DRAWINGS (WITH SCREENS DETACHED FROM THE FRAMES)

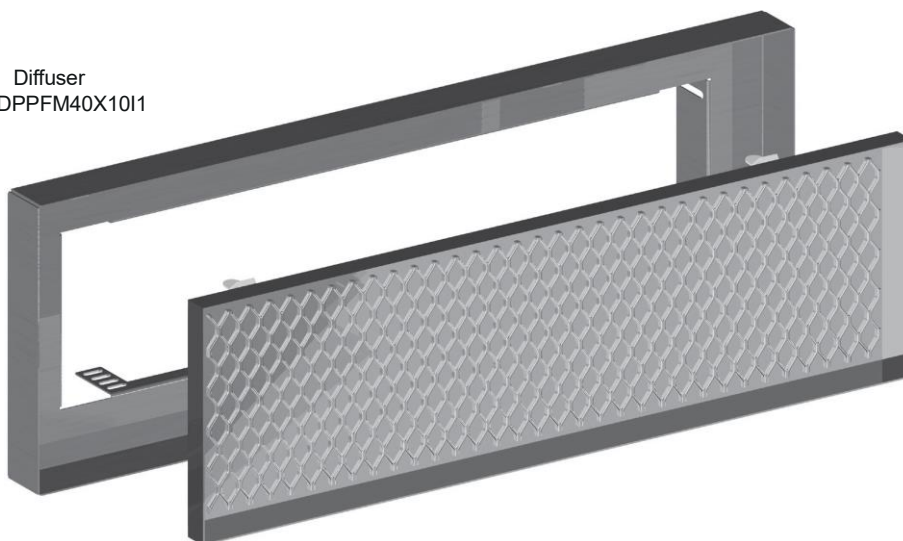
Diffuser
VMDPPFM20X10I1



Diffuser
VMDPPFM30X10I1



Diffuser
VMDPPFM40X10I1



REV 01/2025